



T-SERIES PRESSURE RELIEF VALVES



Griffco diaphragm pressure relief valves are designed to protect chemical feed systems from over pressure damage caused by defective equipment or a blockage in the chemical feed line. Robust construction ensures reliability in the rigorous service of municipal and industrial applications. Wetted materials include: **PVC, CPVC, PP, PVDF, PTFE, 316 SS, A 20 and Hast. C.**
Available sizes: 1/4" - 1/2".

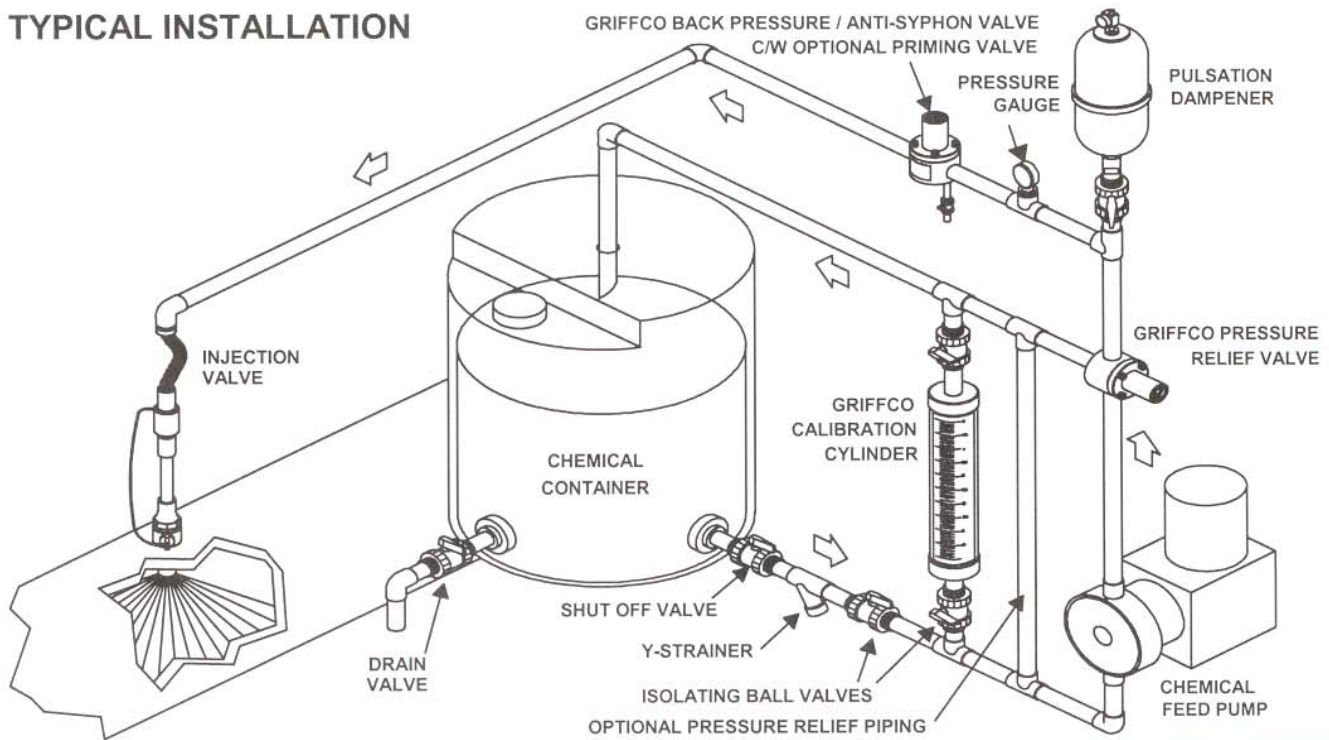
Features:

- High Reliability / Low Cost
- No Bolts on Plastic Models
- Compact Size for OEM Applications
- Adjustable 10 - 150 PSI
- Optional 350 PSI Rated Valve
- 3 Port, 2 Port, & 90° Configuration
- Robust, Machined Construction
- Vulcanised PTFE/EPDM Diaphragm
- Wide Range of Materials

Operation:

Griffco diaphragm pressure relief valves operate when the pressure in the chemical system exceeds the preset pressure of the valve. The diaphragm is held against the valve seat by an internal spring. When the preset pressure is exceeded the diaphragm is forced up and the chemical flows out the relief port, back to the chemical tank or to the suction side of the pump. The valves are pre-set at 50 psi, however they are field adjustable from 10 - 150 psi, (optional 350 psi) via the adjustment screw. The relief valve should be set approximately 15 psi higher than the system pressure. Installation should be made as close to the pump as possible, without any valves or accessories between the relief valve and the pump. Consult your pump manufacturer for his recommendations.

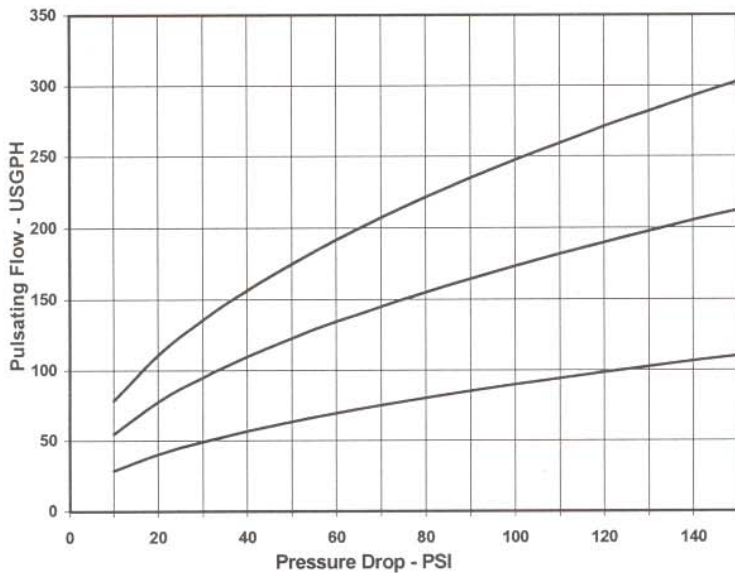
TYPICAL INSTALLATION



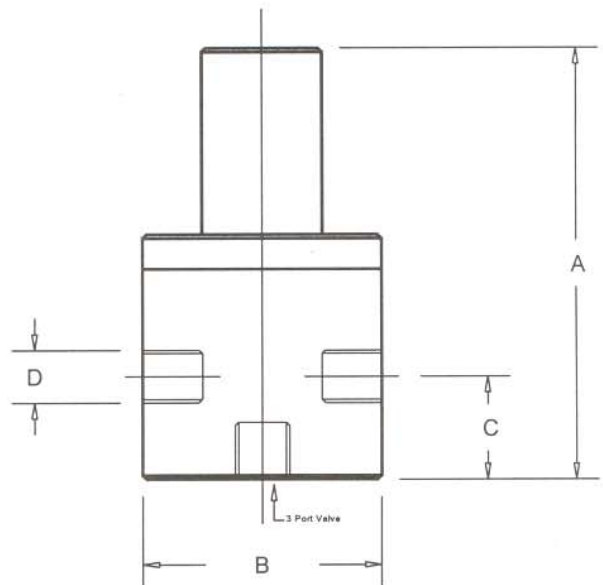
Technical Data:

| | | | | | |
|----------------------------|-----------|------------|---|---------------------|-------------------|
| Sizes: Model PRT | | | 1/4", 3/8", 1/2" | | |
| Connections: | | | NPT and Socket (3 port, 2 port & 90° Configuration) | | |
| Pressure Adjustment | | | 10 - 50 psi, 10 - 150 psi, 50 - 350 psi | | |
| Flow Rates @ 150 psi | | | Shipping Weight: lbs | | |
| Size | Pulsating | Continuous | Plastic | Metal / Plastic Top | Metal / Metal Top |
| 1/4" | 100 USgph | 5 USgpm | 1.0 | 2.5 | 3.0 |
| 3/8" | 200 USgph | 10 USgpm | 1.0 | 2.5 | 3.0 |
| 1/2" | 300 USgph | 15 USgpm | 1.0 | 3.0 | 3.5 |
| Max Temperature: (°F) | | | Plastic: 140° ; Metal: 300°, (Peak Short Term 390°) | | |
| Materials of Construction: | | | | | |
| Diaphragm | | | PTFE / EPDM, Optional: Viton & PTFE / Viton | | |
| Valve Top | | | Standard: PVC (Threaded to Plastic Valves, Bolted to Metal Valves) Optional: CPVC, Steel, 316 SS, (Alloy tops fit alloy valves ONLY) | | |
| Valve Body | | | PVC, CPVC, PP, PTFE, PVDF, 316 SS, A 20, Hast. C, Others on Request | | |

Performance Curves:



Dimensions:



Product Codes For Ordering:

| | | | | |
|-----------------|--------------------------|-----------------------------------|--------------------------|--------------------------|
| PRT | <input type="checkbox"/> | <input type="checkbox"/> | <input type="checkbox"/> | <input type="checkbox"/> |
| | 1 | 2 | 3 | |
| 1 = Size | 2 = Material | 3 = Options | | |
| 025 - 1/4" | P - PVC | V - Viton Diaphragm | | |
| 038 - 3/8" | CP - CPVC | 2P - 2 Port Configuration | | |
| 050 - 1/2" | PP - Polypro | 90 - 90° Configuration | | |
| | T - PTFE | OS - Optional Steel Top | | |
| | K - PVDF | OSS - Optional 316 SS Top | | |
| | S - 316 SS | MS - 50 - 350 psi Valve, SteelTop | | |
| | A - Alloy 20 | MSS - 50 - 350 psi; 316 SS Top | | |
| | C - Hastalloy C | S - Socket Connections | | |

| D | A | B | C |
|------|------|-------|------|
| 1/4" | 3.90 | 2.375 | 0.75 |
| 3/8" | 3.90 | 2.375 | 0.75 |
| 1/2" | 4.60 | 2.375 | 1.10 |

Note: Options OS, OSS, MS, & MSS are only for use on 316SS, A20, & Hast C Valves.