



**Griffco Valve Inc.**  
 6010 N. Bailey Ave., Ste 1B  
 Amherst, NY 14226  
 Phone: 1 716 835-0891  
 Fax: 1 716 835-0893

# T-SERIES PRESSURE RELIEF VALVES



Griffco diaphragm pressure relief valves are designed to protect chemical feed systems from over pressure damage caused by defective equipment or a blockage in the chemical feed line. Robust construction ensures reliability in the rigorous service of municipal and industrial applications. Wetted materials include: **PVC, CPVC, PP, PVDF, PTFE, 316 SS, A 20 and Hast. C.** Available sizes: 1/4+ - 1/2+

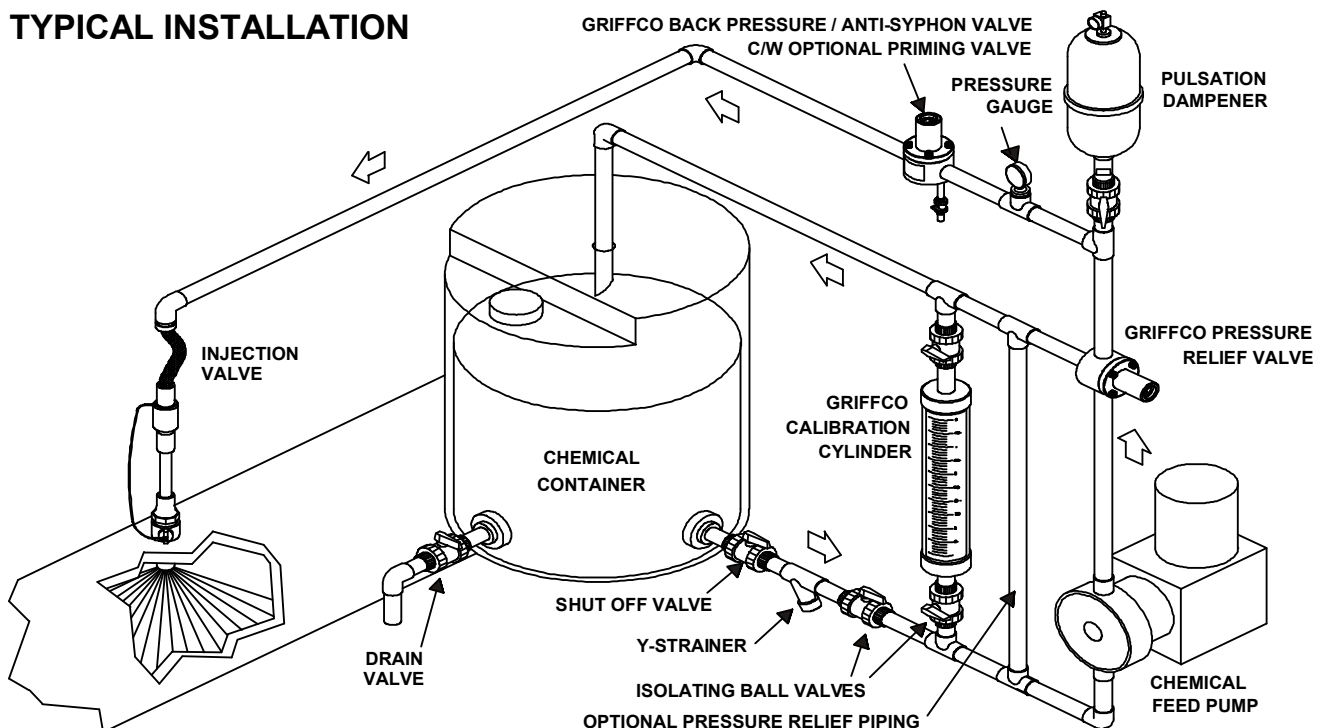
## Features:

- High Reliability / Low Cost
- No Bolts on Plastic Models
- Compact Size for OEM Applications
- Adjustable 10 - 250 PSI
- Optional 350 PSI Rated Valve
- 3 Port, 2 Port, & 90° Configuration
- Robust, Machined Construction
- Vulcanised PTFE/EPDM Diaphragm
- Wide Range of Materials

## Operation:

Griffco diaphragm pressure relief valves operate when the pressure in the chemical system exceeds the preset pressure of the valve. The diaphragm is held against the valve seat by an internal spring. When the preset pressure is exceeded the diaphragm is forced up and the chemical flows out the relief port, back to the chemical tank or to the suction side of the pump. The valves are pre-set at 50 psi, however they are field adjustable from 10 - 150 psi, (optional 350 psi) via the adjustment screw. The relief valve should be set approximately 15 psi higher than the system pressure. Installation should be made as close to the pump as possible, without any valves or accessories between the relief valve and the pump. Consult your pump manufacturer for his recommendations.

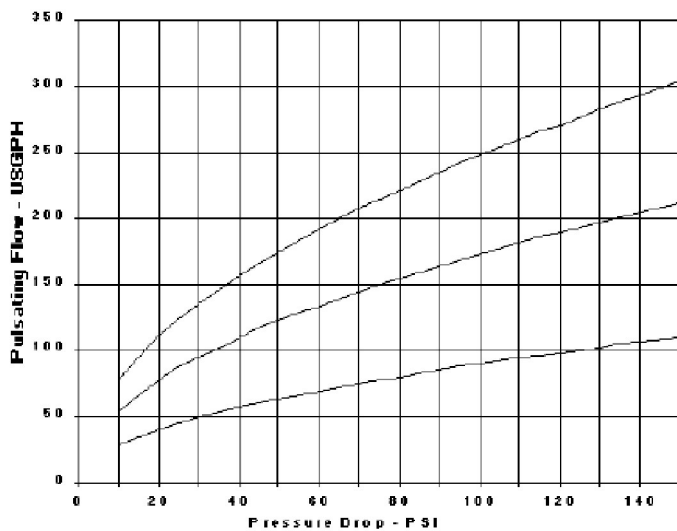
## TYPICAL INSTALLATION



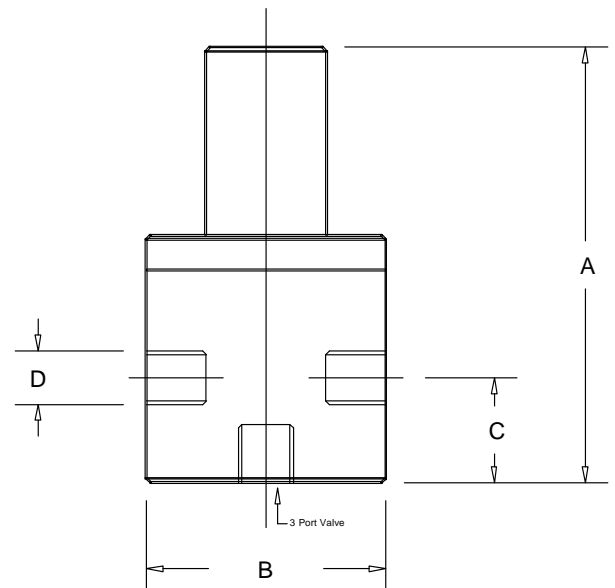
## Technical Data:

Sizes: PRT PRT2 (2 port configuration)			1/4", 3/8", 1/2"		
Connections:			NPT and Socket (3 port, 2 port & 90° Configuration)		
Pressure Adjustment			10 - 50 psi, 10 - 150 psi, 10 - 250 psi, 50 - 350 psi		
Flow Rates @ 150 psi			Shipping Weight: lbs		
Size	Pulsating	Continuous	Plastic	Metal / Plastic Top	Metal / Metal Top
1/4"	100 USGph	5 USgpm	1.0	2.5	3.0
3/8"	200 USGph	10 USgpm	1.0	2.5	3.0
1/2"	300 USGph	15 USgpm	1.0	3.0	3.5
Max Temperature: (°F)			PVC: 140°; CPVC: 190°; PTFE & PVDF: 280°; Metal: 300°, (Short Term 390°)		
Max Operating Pressure @ 70°F: (psi)			Plastic/Noryl: 375 psi, Metal /Metal: 2000 psi		
Materials of Construction:					
Diaphragm			PTFE / EPDM, Optional: Viton & PTFE / Viton		
Valve Top			Standard: Noryl (Threaded to Plastic Valves, Bolted to Metal Valves) Optional: 316 SS, (Alloy tops fit alloy valves ONLY)		
Valve Body			PVC, CPVC, PP, PTFE, PVDF, 316 SS, A 20, Hast. C, Others on Request		

## Performance Curves:



## Dimensions:



## Product Codes for Ordering:

PRT	<input type="checkbox"/>	<input type="checkbox"/>	<input type="checkbox"/>	<input type="checkbox"/>
PRT2	1	2	3	
<b>1 = Size</b>	<b>2 = Material</b>	<b>3 = Options</b>		
025 - 1/4+	P - PVC	V - Viton Diaphragm		
038 - 3/8+	CP - CPVC	S - Socket Connections		
050 - 1/2+	PP - Polypro	90 - 90° Configuration		
	T - PTFE	OSS - Optional 316 SS Top		
	K - PVDF	MSS - 50 - 350 psi; 316 SS Top		
	S - 316 SS			
	A - Alloy 20			
	C - Hastalloy C			

D	A	B	C
1/4" Plastic	3.90	2.35	0.75
1/4" Metal	3.50	2.35	0.75
3/8" Plastic	3.90	2.35	0.75
3/8" Metal	3.50	2.35	0.75
1/2" Plastic	4.60	2.35	1.25
1/2" Metal	4.25	2.35	1.25

Note: Options OSS, & MSS are only for use on 316SS, A20, & Hast C Valves.

For more detailed information visit us at [www.griffcovalve.com](http://www.griffcovalve.com)