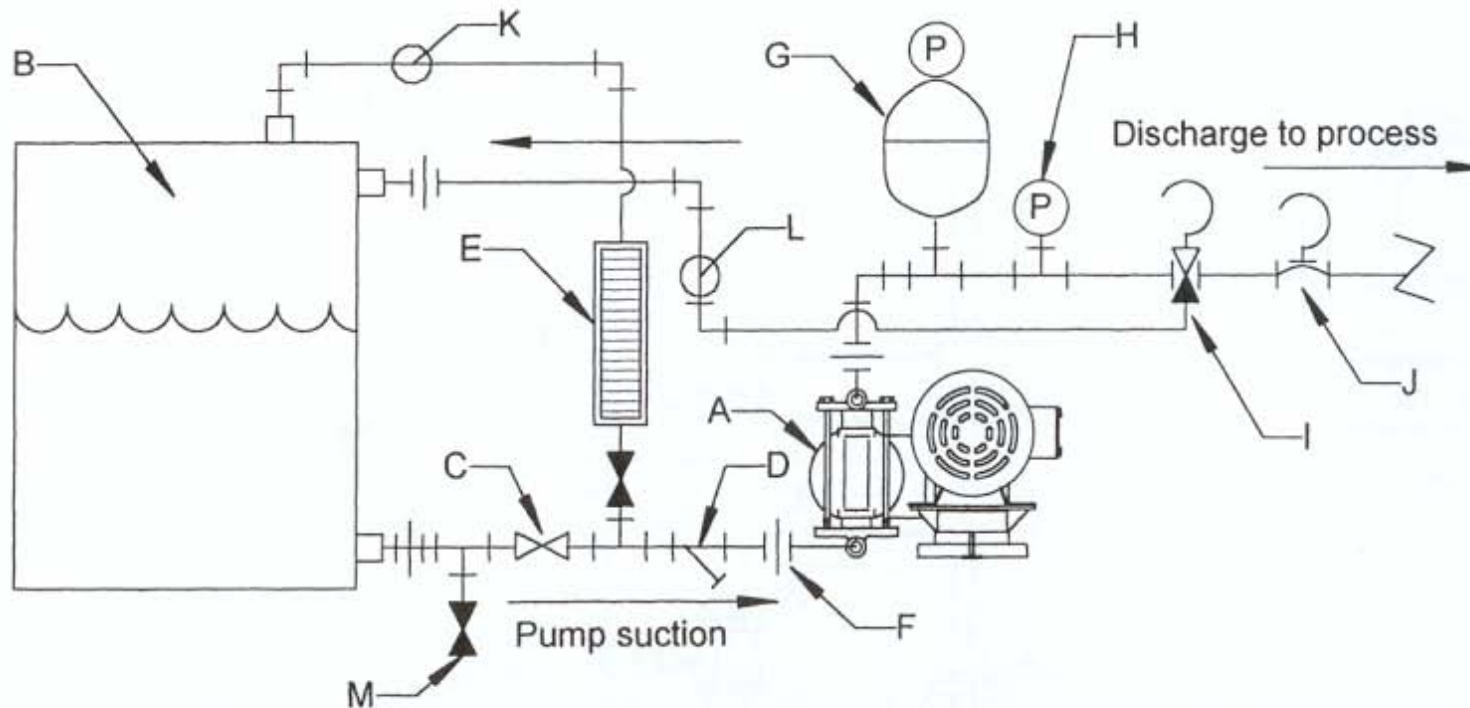


Madden Manufacturing, Inc.  
Elkhart, IN, USA

- A. Diaphragm metering pump
- B. Tank
- C. Control valve
- D. Strainer
- E. Calibration column
- F. Union for piping installation to pump
- G. Pulsation dampener, chargeable type

- H. Pressure gauge
- I. Pressure relief valve, adjustable, diaphragm type
- J. Back pressure valve, adjustable, diaphragm type
- K. Vent line from calibration column
- L. Return line to tank from pressure relief valve
- M. Tank drain



TYPICAL METERING PUMP INSTALLATION DIAGRAM

See Form No. M-316, Start Up Protocol, for installation instructions. Note, not all of the piping accessories shown above may be required.