



Griffco Valve Inc.
6010 N. Bailey Ave., Ste 1B
Amherst, NY 14226
Phone: 1 716 835-0891
Fax: 1 716 835-0893

T-SERIES BACK PRESSURE VALVES

Features:

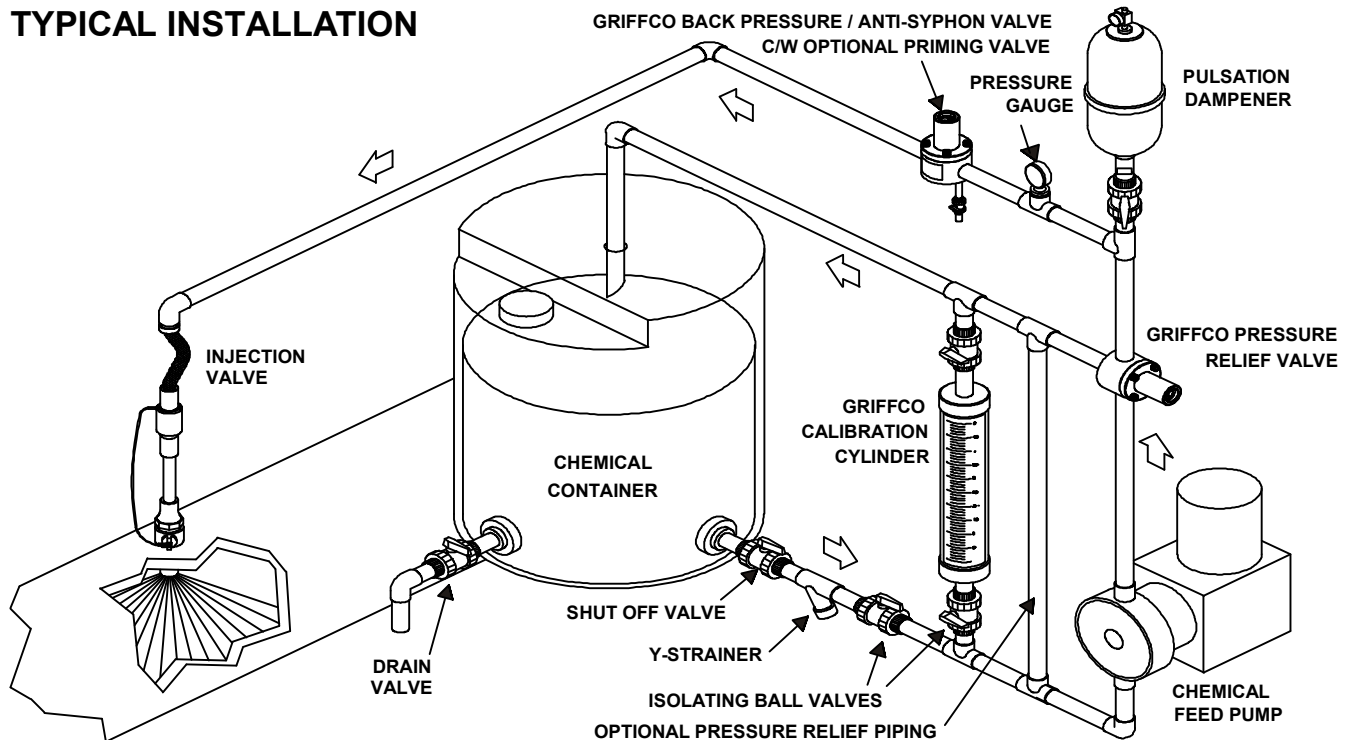
- High Reliability / Low Cost
- No Bolts on Plastic Models
- Compact Size for OEM Applications
- Adjustable 10 - 150 PSI
- Optional 350 PSI Rated Valve
- Anti-Siphon Function
- Robust, Machined Construction
- Vulcanised PTFE/EPDM Diaphragm
- Wide Range of Materials

Operation:

Griffco diaphragm back pressure valves apply positive discharge pressure to a metering pump system to prevent siphoning and eliminate varying dosage rates caused by fluctuating downstream pressure. The diaphragm is held against the valve seat by an internal spring. When the preset pressure is exceeded, the diaphragm is forced up and chemical flows through the valve to the injection point. The valves are preset for 50 psi, however they are field adjustable from 10 - 150 psi via the adjustment screw. Installation should be as close to the injection point as possible to prevent chemical line drainage, and it is most important that all chemical system equipment such as pulsation dampeners and pressure gauges are between the pump and back pressure valve.

Griffco diaphragm back pressure valves are designed to enhance the performance of chemical feed systems by applying a continuous back pressure to the chemical feed pump, while also acting as an anti-syphon valve. Robust construction ensures reliability in the rigorous service of municipal and industrial applications. Wetted materials include: **PVC, CPVC, PP, PVDF, PTFE, 316 SS, A 20 and Hast. C.** Available sizes: 1/4+ - 1/2+

TYPICAL INSTALLATION



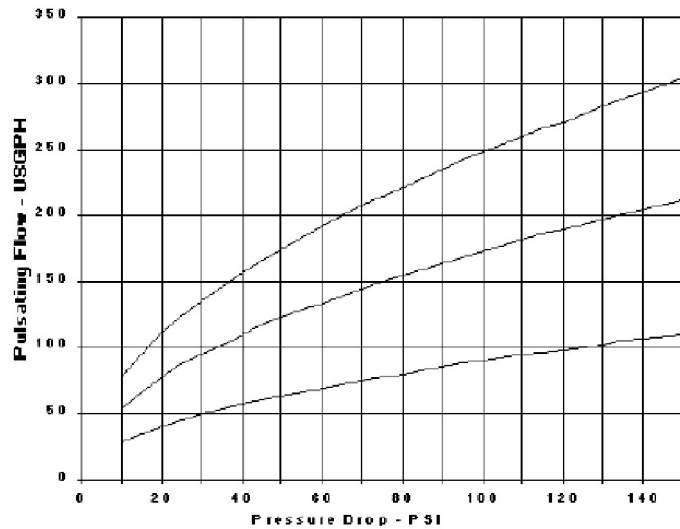
CALL 1 - 800 - GRIFFCO

Bulletin # BPV1003-2007

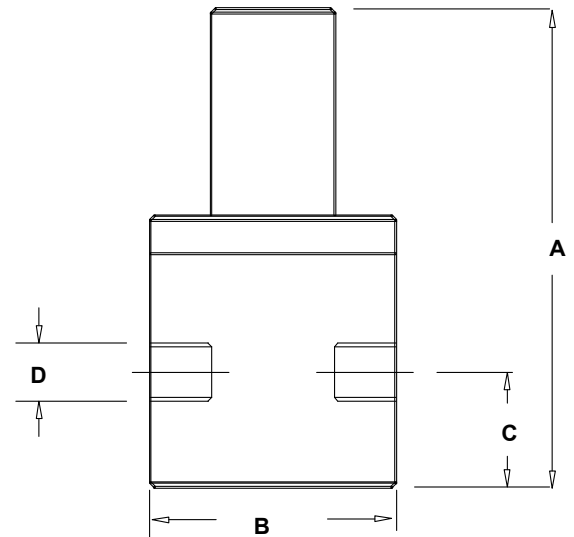
Technical Data:

Sizes: Model BPT			1/4", 3/8", 1/2"		
Connections:			NPT and Socket		
Pressure Adjustment			10 - 50 psi, 10 - 150 psi, 10 - 250 psi, 50 - 350 psi		
Flow Rates @ 150 psi			Shipping Weight: lbs		
Size	Pulsating	Continuous	Plastic	Metal / Plastic Top	Metal / Metal Top
1/4"	100 USgph	5 USgpm	1.0	2.5	3.0
3/8"	200 USgph	10 USgpm	1.0	2.5	3.0
1/2"	300 USgph	15 USgpm	1.0	3.0	3.5
Max Temperature: (°F)			PVC: 140°; CPVC: 190°; PTFE & PVDF: 280°; Metal: 300°, (Short Term 390°)		
Max Operating Pressure @ 70°F: (psi)			Plastic/Noryl: 375 psi, Metal /Metal: 2000 psi		
Materials of Construction:					
Diaphragm			PTFE / EPDM, Optional: Viton & PTFE / Viton		
Valve Top			Standard: Noryl (Threaded to Plastic Valves, Bolted to Metal Valves) Optional: 316 SS, (Alloy tops fit alloy valves ONLY)		
Valve Body			PVC, CPVC, PP, PTFE, PVDF, 316 SS, A 20, Hast. C, Others on Request		

Performance Curves:



Dimensions:



Product Codes For Ordering:

BPT

□ □ □ □ □
1 2 3

1 = Size

025 - 1/4+
038 - 3/8+
050 - 1/2+

2 = Material

P - PVC
CP - CPVC
PP - Polypro
T - PTFE
K - PVDF
S - 316 SS
A - Alloy 20
C - Hastalloy C

3 = Options

V - Viton Diaphragm
S - Socket Connections
OSS - Optional 316 SS Top
MSS - 50 - 350 psi; 316 SS Top
AR - Optional Air Release Port

D	A	B	C
1/4" Plastic	3.90	2.35	0.75
1/4" Metal	3.50	2.35	0.75
3/8" Plastic	3.90	2.35	0.75
3/8" Metal	3.50	2.35	0.75
1/2" Plastic	4.60	2.35	1.25
1/2" Metal	4.25	2.35	1.25

Note: Options OS, OSS, MS, & MSS are only for use on 316SS, A20, & Hast C Valves.

For more detailed information visit us at www.griffcovalve.com