



BACK PRESSURE VALVES



Griffco diaphragm back pressure valves are designed to enhance the performance of chemical feed systems by applying a continuous back pressure to the chemical feed pump, while also acting as an anti-syphon valve. Robust construction ensures reliability in the rigorous service of municipal and industrial applications. Wetted materials include: **PVC, CPVC, PP, PVDF, PTFE, 316 SS, A 20 and Hast. C.** Available sizes: 1/4" - 2".

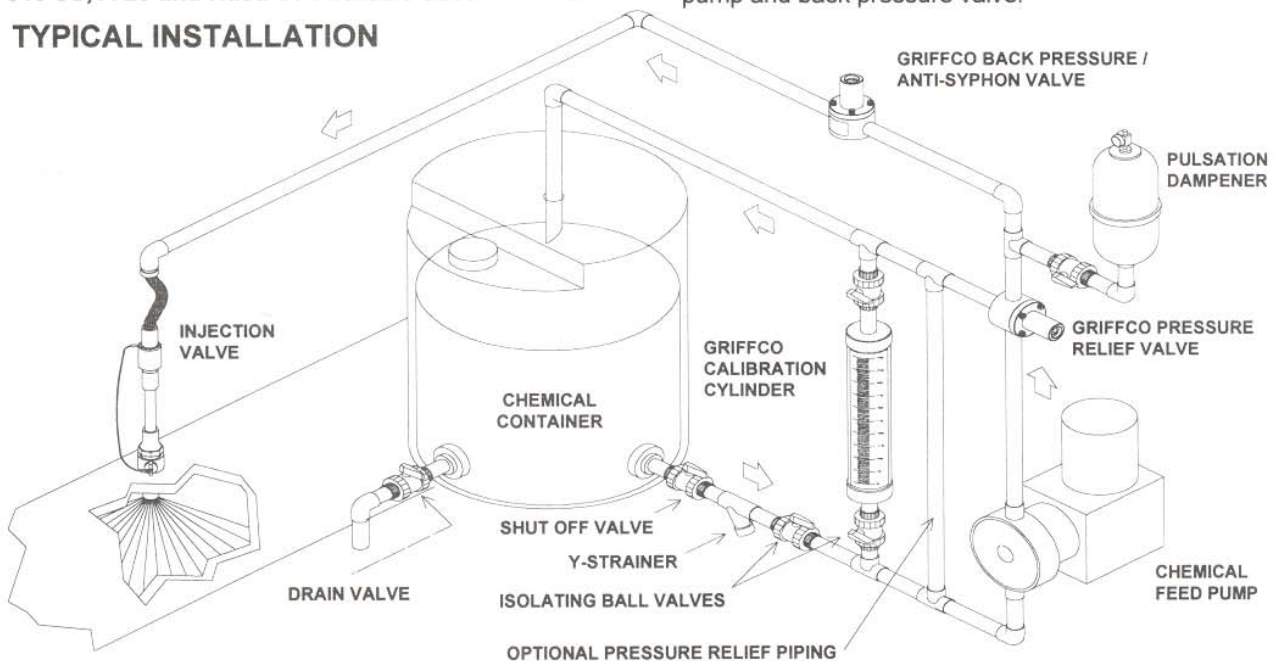
Features:

- High Reliability / Low Cost
- Robust, Machined Construction
- Vulcanized PTFE/EPDM Diaphragm
- Externally Adjustable 10 - 150 PSI
- Optional 350 PSI Rated Valve
- Anti-Syphon Function
- Wide Range of Materials
- Tamper Resistant Adjustment Screw
- Manufactured and Stocked in the USA

Operation:

Griffco diaphragm back pressure valves apply positive discharge pressure to a metering pump system to prevent siphoning and eliminate varying dosage rates caused by fluctuating downstream pressure. The diaphragm is held against the valve seat by an internal spring. When the preset pressure is exceeded, the diaphragm is forced up and chemical flows through the valve to the injection point. The valves are preset for 50 psi, however they are field adjustable from 0-- 150 psi via the adjustment screw. Installation should be as close to the injection point as possible to prevent chemical line drainage, and it is most important that all chemical system equipment such as pulsation dampeners and pressure gauges are between the pump and back pressure valve.

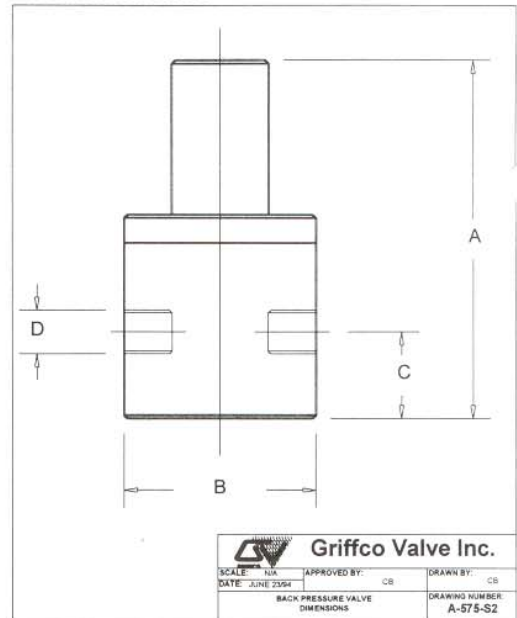
TYPICAL INSTALLATION



Technical Data:

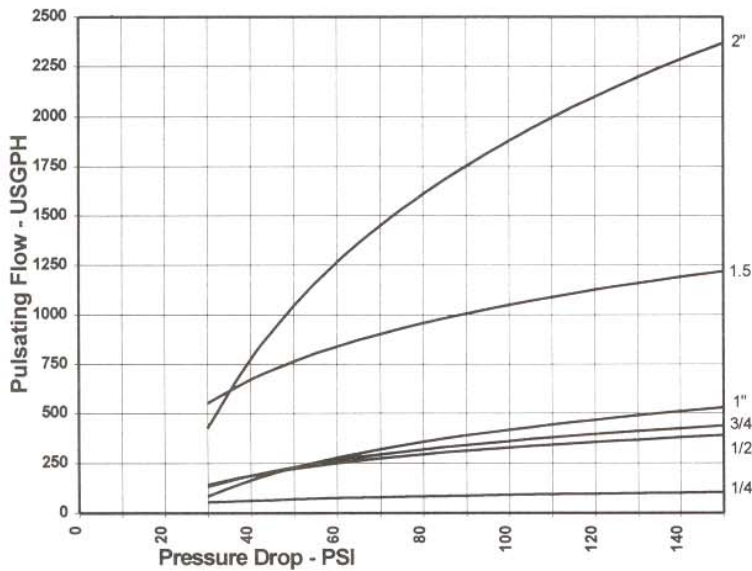
Sizes:		1/4", 1/2", 3/4", 1", 1 1/2" and 2"		
Connections:		NPT, Socket, Flange		
Pressure Adjustment		10 - 150 psi; 50 - 350 psi		
Flow Rates @ 150 psi		Shipping Weight: lbs		
Size	Pulsating	Continuous	Plastic	Metal
1/4"	100 USgph	5 USgpm	1.0	3.0
1/2"	300 USgph	21 Usgpm	3.0	7.0
3/4"	300 USgph	21 Usgpm	3.0	7.0
1"	500 USgph	26 Usgpm	3.5	8.0
1 1/2"	1200 USgph	63 Usgpm	9.0	27.0
2"	2350 USgph	120 USgpm	9.0	27.0
Max Temperature: (°F)		Plastic: 140° ; Metal: 300°		
Materials of Construction:				
Diaphragm		PTFE / EPDM, Optional: Viton		
Valve Top		Standard: PVC Optional: CPVC, Steel, 316 SS		
Valve Body		PVC, CPVC, PP, PTFE, PVDF, 316 SS, A 20, Hast. C		

Dimensions:



D	1/4	1/2	3/4	1	1 1/2	2
A	3.500	5.500	5.500	5.800	9.00	9.00
B	2.375	3.500	3.500	3.500	5.50	5.50
C	0.750	1.125	1.125	1.250	2.25	2.25

Performance Curves:



Product Codes For Ordering Back Pressure Valves:

BPV -

1 2 3

1 = Size

025 - 1/4"
037 - 3/8"
05L - 1/2"
050 - 1/2"
075 - 3/4"
100 - 1"
150 - 1 1/2"
200 - 2"

2 = Material

P - PVC
CP - CPVC
PP - Polypro
T - PTFE
K - PVDF
S - 316 SS
A - Alloy 20
C - Hastalloy C

3 = Options

V - Viton Diaphragm
S - Socket Connections
F - Flanged Connections
OS - Optional Steel Top
OSS - Optional 316 SS Top
MS - 50 - 350 psi Valve, Steel Top
MSS - 50 - 350 psi; 316 SS Top
AR - Optional Air Release Port

Component Drawing:

